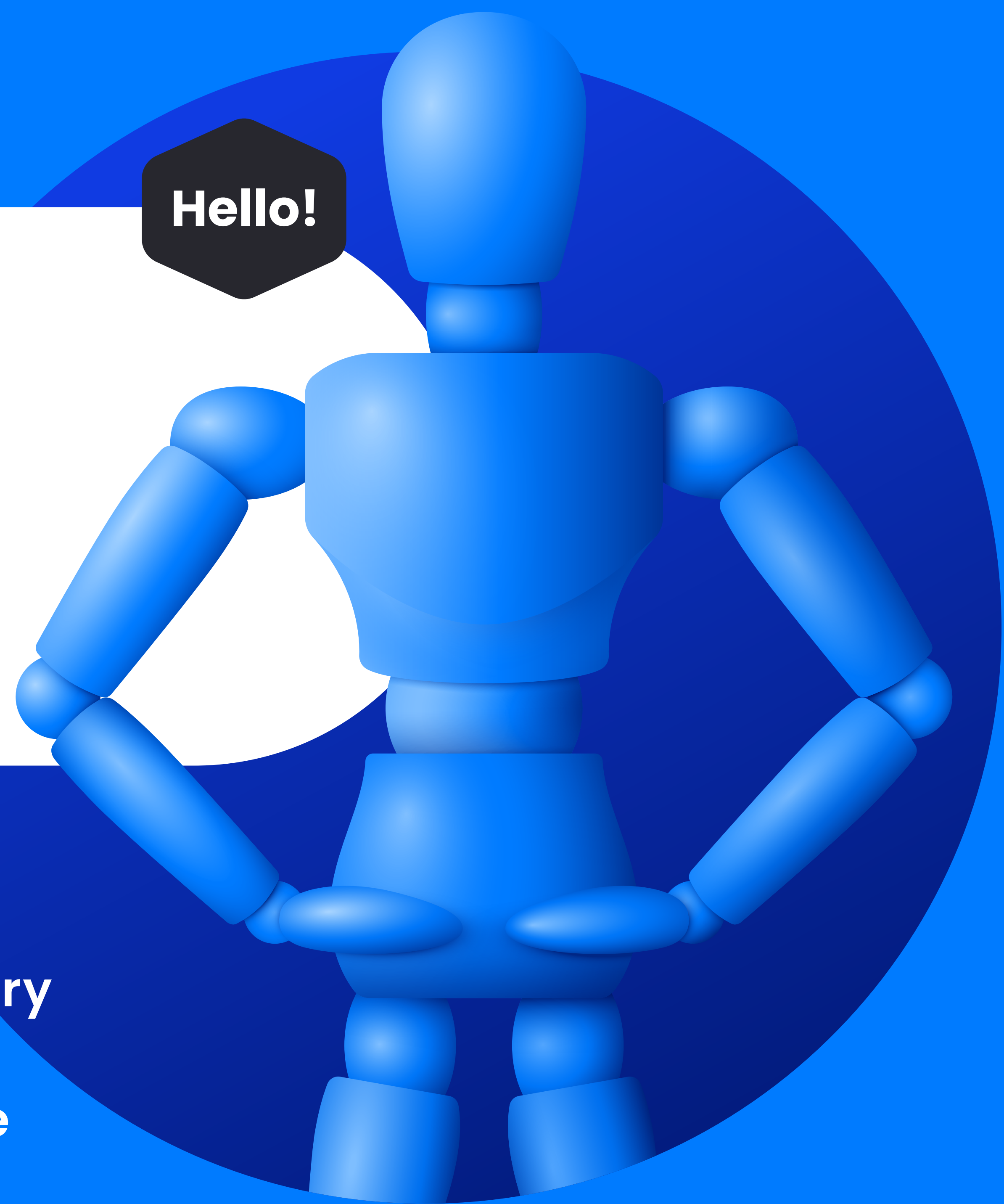


# The Cognitive Hand will work out time for you!

Hello!



Thanks to the unique technology, it will understand every document and letter from the client, independently extract the necessary information, verify it and help enter it into the business application so that you can take care of more important tasks.



## 60h per month

employees lose out on tasks that are tedious, repetitive and not very developing



## >80% of information

is stored and exchanged as natural language texts



## 1-3h a day

76% of office workers spend entering data into applications

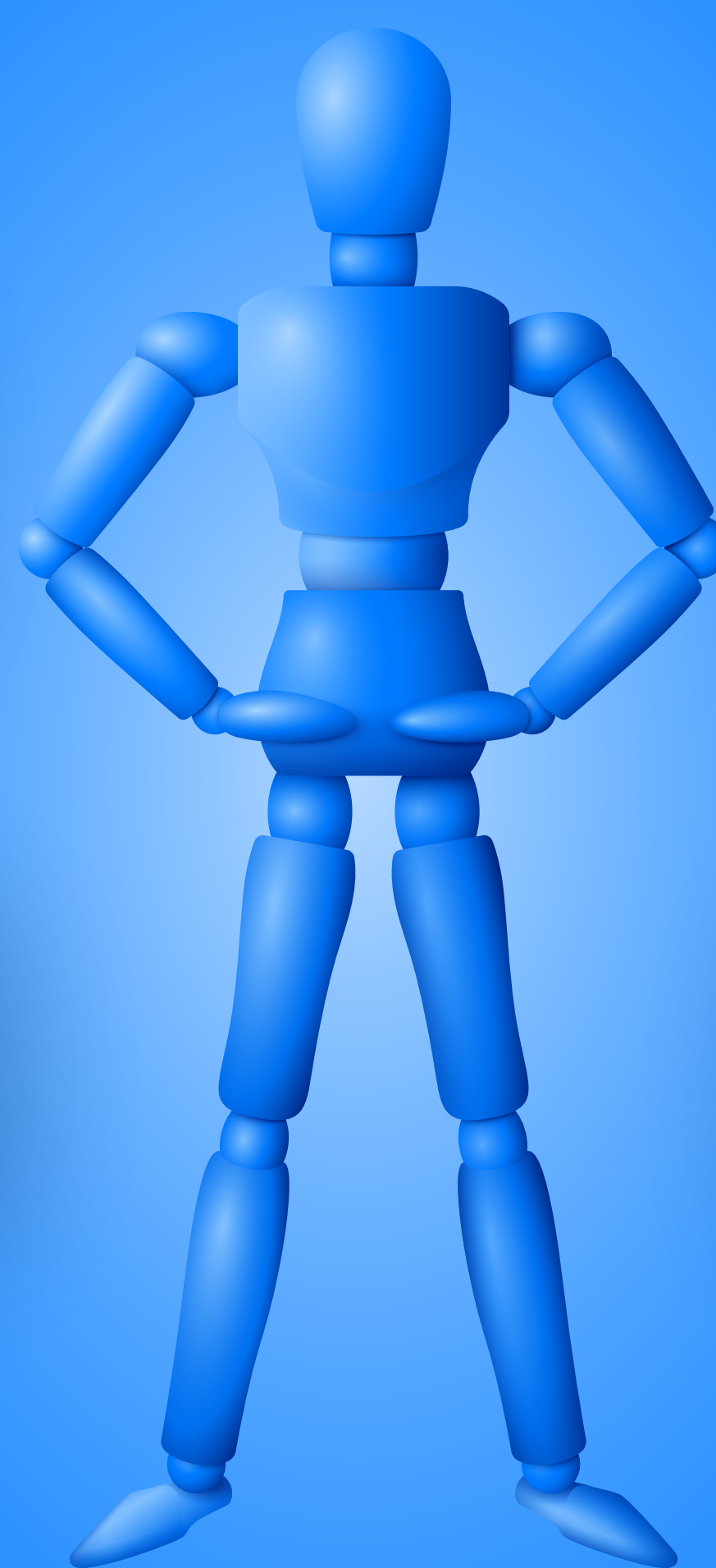


Automation involves more and more business processes, yet employees still waste 30% of their time tediously copying data from a variety of documents to company systems. This affects not only the motivation of employees, but also operational efficiency, data quality and customer satisfaction. What's more, in the face of difficulties in retaining employees, this is one of the biggest challenges for business continuity.

## What does the Cognitive Helper do to help save time?

### Completes forms

Automatically based on the indicated document



### Suggests information

Just select the data you need from the list



### Verifies documents

Reduces accidental errors



### Helps in creating texts

Creates quick responses to cases



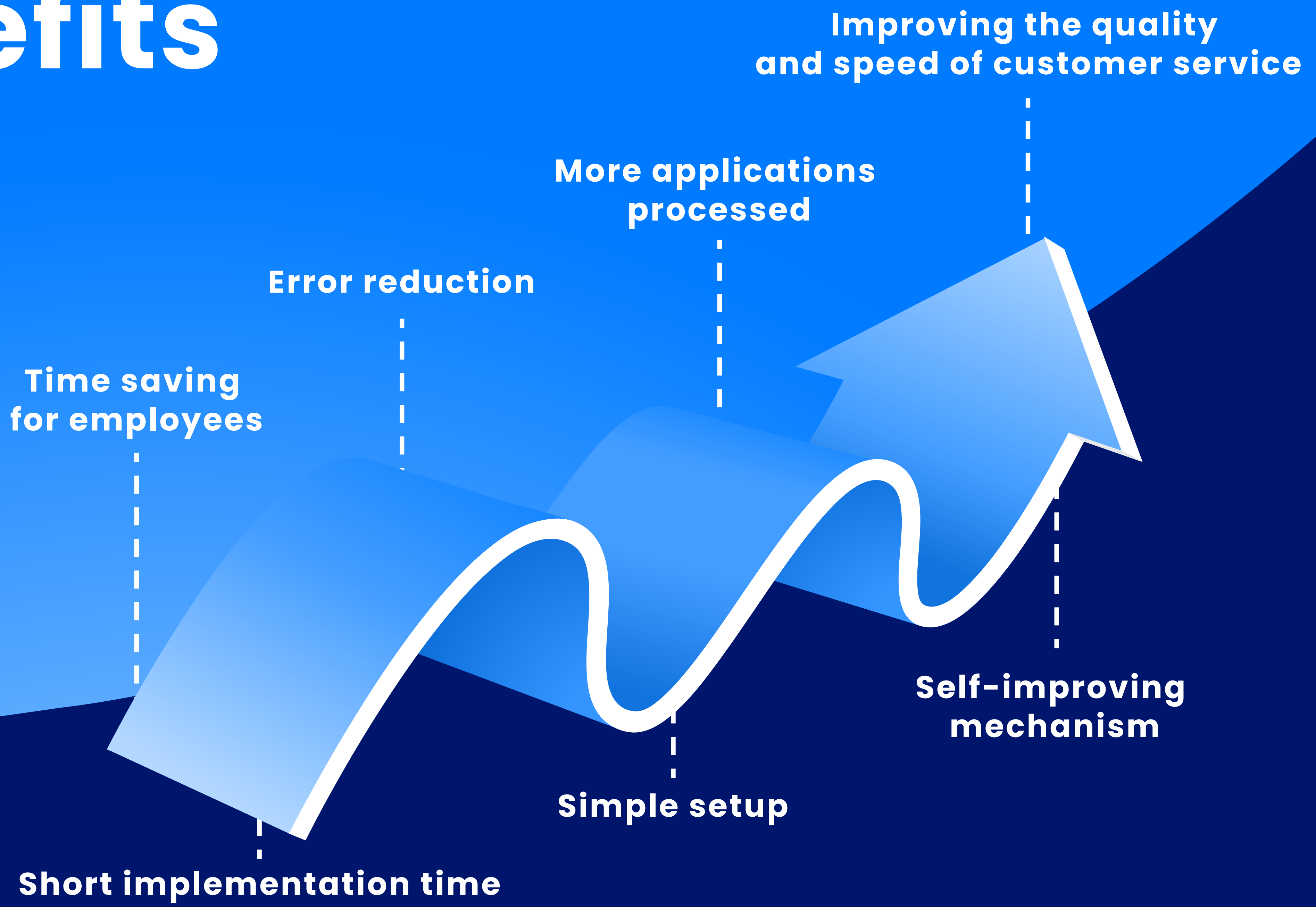


# Benefits



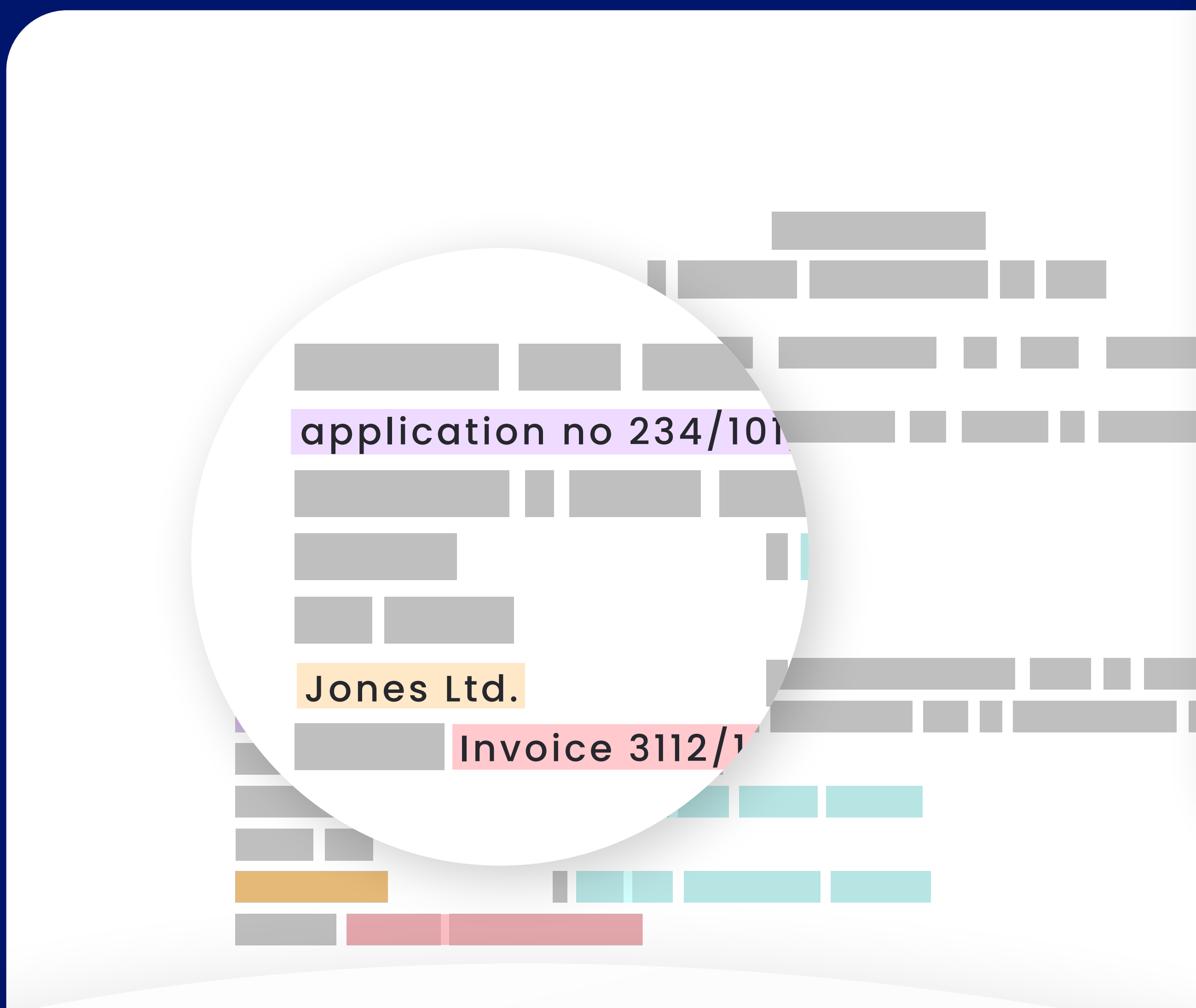
Business

Technological



# Use Case

**Client:** One of the largest solid fuel distributors in Europe



## Problem

Thousands of financial documents (invoices, bills, notes, decisions and others) received monthly, requiring service within max. 3 days.

## Solution

Automation of activities such as:

- Downloading documents from e-mail and paper scanned by the office
- Categorization, verification and submission of documents and attachments to the required form
- Extracting information necessary to start billing processes in the ERP system

## Benefits

- Reduced time needed to handle a document by 80%
- Data used in billing processes contains fewer errors
- Easy compliance with contractor service time
- Employee has more time for creative tasks

**Sounds Interesting?  
Let's arrange  
a free workshop!**

Mail: [hello@4semantics.pl](mailto:hello@4semantics.pl)  
Tel: +48 730 70 47 47

[4Semantics.pl/en](http://4Semantics.pl/en)

